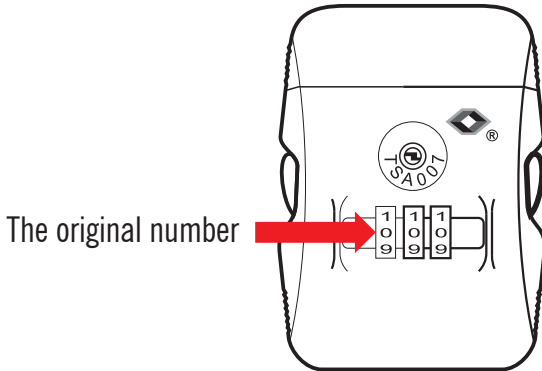


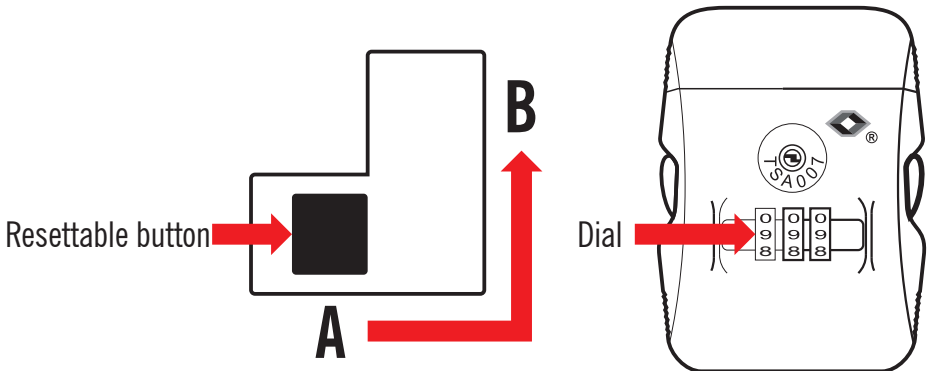
CODE-LOCK INSTRUCTION

The original number is 0-0-0, to set your personal combination, please follow these steps:

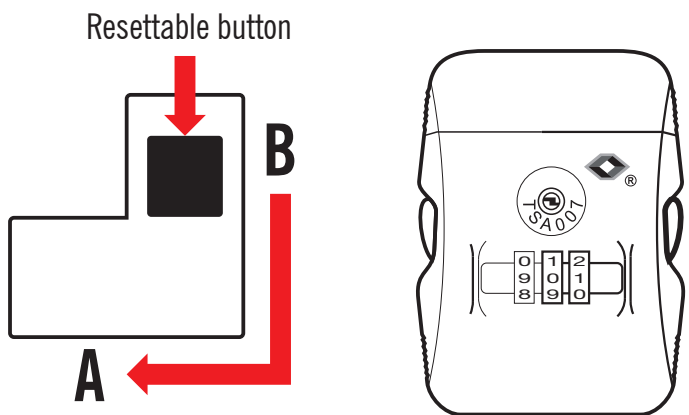
1. Open the lock (The original number is 0-0-0)



2. Press the Resettable Button to B. Set your own combination by turning the dials (for example 9-9-9)



3. Push the resettable button back to A



Now your personal code is set. Remember your personal combination. If you want to change to a new combination, repeat steps 1-3