

**NEW
PRODUCT**



BLACK/SILVER
U92058SL

FLIGHT CASE SET RANE TWELVE/ SEVENTY-TWO PLUS (WHEELS)

U91058BL, U92058SL

UDG Ultimate Flightcases not only transport your complete set up easily & securely, but also facilitates devices to be setup within minutes. With these premium features incorporated, the UDG Ultimate Flightcases provides premium professional quality in a very stylish modern black/silver colored combination.

FEATURES

- Fits: 2 x Rane Twelve + 1 x Rane Seventy-Two
- Improved powder coated and anodized hardware
- High density diamond embossed EVA foam & carpeted protective padding
- Dual anchor rivets with included washer
- Convenient 80 mm space at rear for connections & PSU storage
- Cable access hole with removable UDG emblem cover
- Removable cable & PSU storage cover panel
- Removable front access panel
- Roller wheels with high quality in-line skate bearings for convenient transport
- Heavy duty construction of 9 mm thick plywood
- Laminated in a black finish with a honeycomb/hexagonal "Stage Grip" pattern
- Extra-wide solid aluminum profiles
- High grade aluminium UDG logo plate
- UDG heavy-duty spring-loaded handles
- Secure stacking due to stackable ball corners
- Sturdy construction
- Recessed butterfly twist latch lock

| DIMENSION | | WIDTH | HEIGHT | DEPTH |
|--------------------------|------|-------|----------|-------|
| OUTER | CM | 112.3 | 53.1 | 23 |
| | INCH | 44.2 | 20.9 | 9.1 |
| INNER PLAYER COMPARTMENT | CM | 37.1 | 41.5 | 6.4 |
| | INCH | 14.6 | 16.3 | 2.5 |
| INNER MIXER COMPARTMENT | CM | 28.3 | 41.5 | 6.4 |
| | INCH | 11.1 | 16.3 | 2.5 |
| WEIGHT | | 22 kg | 48.5 lbs | |



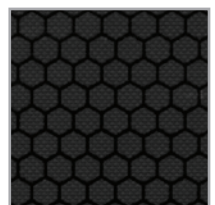
BLACK
U91058BL



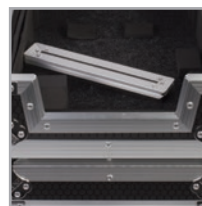
High grade aluminium
UDG logo plate



Improved powder coated
and anodized hardware



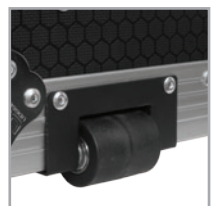
Laminated in a black finish
with a honeycomb/hexagonal
"Stage Grip" pattern



Removable front access
panel



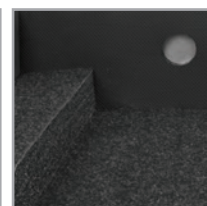
Removable cable & PSU
storage cover panel



Roller wheels with high
quality in-line skate
bearings



Secure stacking due to
stackable ball corners



High density diamond
embossed EVA foam &
carpeted protective padding



Cable access hole with
removable UDG emblem
cover